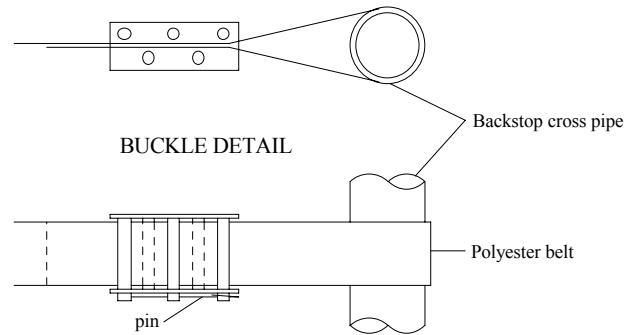
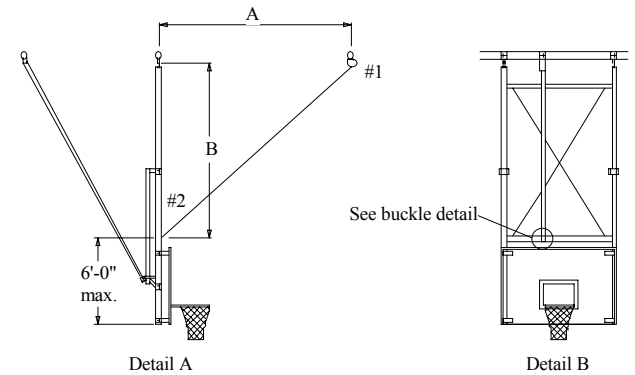


TOP PLATE DETAIL

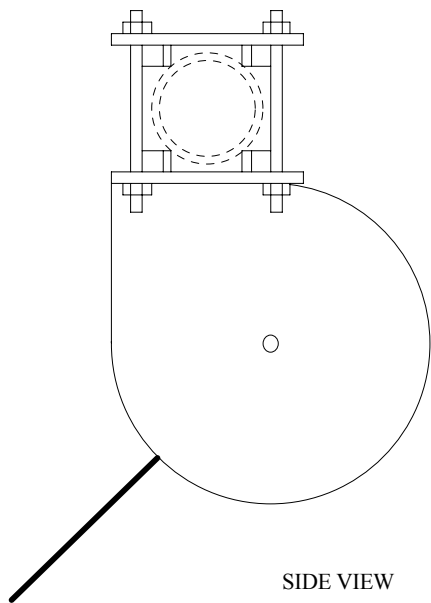


For attachment to backstop frame, remove pin from buckle and remove the outer retainer. Place the belt around the backstop cross pipe or other available member, depending on the type of backstop. Return loose end of belt back across buckle. Leave sufficient overage to clear buckle. Replace outer retainer and pin. Snug buckle to cross pipe.



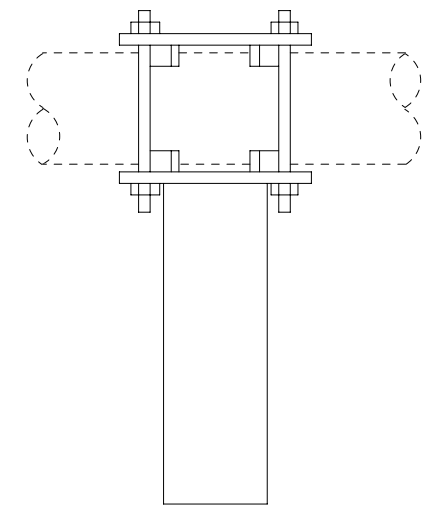
This is a typical illustration. The principle would be the same for all designs & types of backstops.

3 1/2" support pipe may be turned either direction



SIDE VIEW

The #280 SAF-LOK shall be a completely automatic mechanism which operates on the principle of inertia, similar to automobile safety belts, with a 2 inch wide polyester strap capable of holding a load of 6000 ponuds. The #280 SAF-LOK automatically engages to lock the basketball backstop in position at any time, due to a sudden surge of speed created by cable breakage or other part's failure. Each unit is factory tested at 1000 pounds of free-fall thrust. The #280 SAF-LOK has an automatic reset feature, thus eliminating the need for manual or electric reset. A special heavy duty buckle is included for the attachment of the polyester strap to the backstop frame.



FRONT VIEW

REVISED	DRAWN BY	#280 SAF-LOK SPECS & DETAILS	PROJECT	DATE 10-05-94
			DISTRIBUTOR	ORDER #
	SCALE	<b>Institutional Products Inc.</b> <b>Indianapolis, Indiana</b>		DWG #
				SHT OF